

Appendix B: Final Draft: Sevenoaks District Community Plan
Priorities for Action 2019-2022

Sevenoaks District Community Plan Priorities for Action 2019-2022

Final Draft



Appendix B: Final Draft: Sevenoaks District Community Plan Priorities for Action 2019-2022

Contents

Introduction	Page 3
About the Sevenoaks District	Pages 4-5
Who did we consult?	Pages 6
Equality and Inclusion Statement	Page 6
The Sevenoaks District Community Partnership: who are we?	Page 7
Safe Communities	Pages 8-11
Caring Communities	Pages 12-15
Green Environment	Pages 16-19
Healthy Environment	Pages 20-23
Dynamic Economy	Pages 24-27
Sustainable Economy	Pages 28-31
How to get in contact	Page 32

**This publication is available in
large print. For a copy please call
01732 227000**

If you need help communicating with us or understanding the document, we can arrange for an interpreter to help you. Please contacting us on 01732 227000 stating you language and preference

Appendix B: Final Draft: Sevenoaks District Community Plan Priorities for Action 2019-2022

Introduction

The Community Plan creates a long-term vision for the Sevenoaks District and sets out the community's priorities for action.

We are pleased to present the priorities for the three years 2019-2022. This is based on widespread consultation with local people and our partners.

The Sevenoaks District Local Strategic Partnership delivers the Community Plan. The Partnership is made up of public sector organisations together with voluntary, community and faith sector representatives. It is co-ordinated by Sevenoaks District Council.

The priorities set out in this document help us to deliver our 15-year vision:

Safe Communities

A safer place to live, work and travel



Caring Communities

Children are enabled to have the best start and people can be supported to live independent lives



Green Environment

People can enjoy high quality urban and rural environments



Healthy Environment

People have healthy lifestyles, access to quality healthcare and health inequalities are reduced



Dynamic Economy

A thriving local economy where businesses flourish, where people have skills for employment and tourism is supported



Sustainable Economy

People can live, work and travel more easily and are empowered to shaped their community



Appendix B: Final Draft: Sevenoaks District Community Plan Priorities for Action 2019-2022

About the Sevenoaks District



- Train services to London take just under **30 minutes** from Swanley and just over **30 minutes** from Sevenoaks.
- **1 hour** by car to Dover port.
- **40 minutes** by car to London airports.
- **9 miles** from Swanley to Ebbsfleet International station.

Appendix B: Final Draft: Sevenoaks District Community Plan Priorities for Action 2019-2022

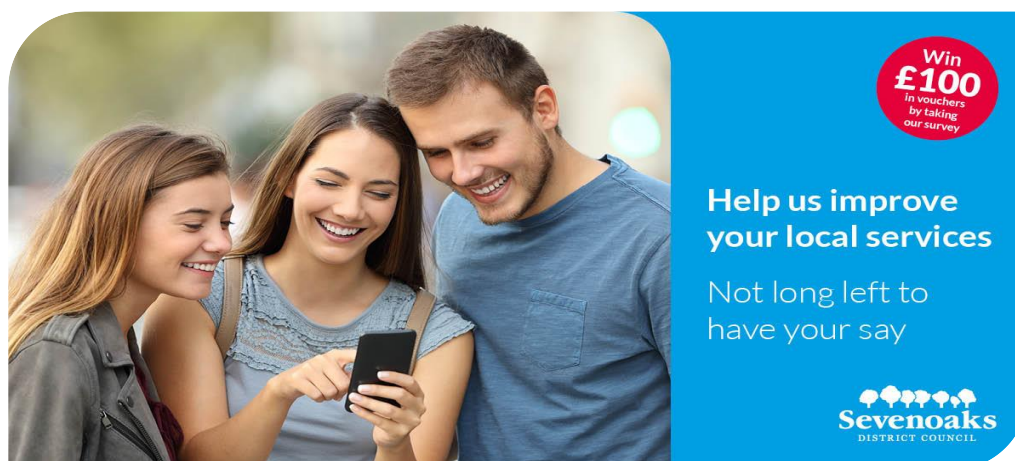


- 93% of the District is designated Green Belt.
- 60% of the District is in the Kent Downs or High Weald Area of Outstanding Natural Beauty.
- 11% is covered in Ancient Woodland
- Six main settlements – Sevenoaks, Swanley and Edenbridge, Westerham, New Ash Green and Otford.

- Sevenoaks District is perceived to be affluent but this masks local pockets of urban and rural deprivation. For example, Swanley St Mary's ward falls within the 10% most deprived wards in Kent and the South East (2015, Indices of Multiple Deprivation).
- 11.6% of children under 16 (2,465) live in low-income families in receipt of Child Tax Credit where rural deprivation is more isolating than poverty in the towns. The majority of children living in poverty (73.9%) live in lone parent families.
- According to the Kent County Council Housing led population forecast projections, the population of Sevenoaks District is forecast to grow by more than 13,500 by 2028.
- The 2017 Mid-year population estimates (Office for National Statistics) show that Sevenoaks District has a population of 119,400 residents and the third lowest population density in Kent measured as **3.1 persons per hectare**.
- According to Kent County Council the number of people over 65 is forecast to rise by **41.1% by 2036 (10,400)** and the number of people over 85 is forecast to rise by **97.2% by 2036 (3,500)**.

Appendix B: Final Draft: Sevenoaks District Community Plan Priorities for Action 2019-2022

Who did we consult?



To help identify our priorities for the District over the next three years, we consulted a wide range of residents, community representatives, statutory groups and voluntary and community groups at events and forums across the District. This included:

- All residents consulted through our District-wide In Shape magazine;
- Digital marketing campaign targeting young people and people under 40 years of age;
- 659 survey responses;
- Including 154 survey responses from young people in years 11,12 and 13 at Knole Academy, Sevenoaks;
- Eight stakeholder workshops with statutory, voluntary and community groups, patient participation groups, and representatives for the Sevenoaks District Access Group.

Equality and inclusion statement for the Local Strategic Partnership

We recognise that everyone has a contribution to make to our society and a right to access services without being discriminated against or disadvantaged because of their:

- | | | |
|--------------|---------------------------------------|-------------------------|
| • Race | • Religion/ belief | • Transgender |
| • Disability | • Sexual orientation | • Caring responsibility |
| • Gender | • Pregnancy or maternity | • Employment status |
| • Age | • Marital or civil partnership status | |

We will work to ensure that all services provided by partners or funding offered will conform to these standards and expectations.

Appendix B: Final Draft: Sevenoaks District Community Plan Priorities for Action 2019-2022

The Sevenoaks District Local Strategic Partnership

Who are we?

The Sevenoaks District Community Partnership co-ordinates the monitoring and delivery of the Action Plan. It is made up of representatives from the following organisations:



Dartford, Gravesham and Swanley
Clinical Commissioning Group



West Kent
Clinical Commissioning Group



Kent Fire &
Rescue Service



Places to live. Space to grow.





Safe Communities

A safer place to live, work and travel

Insert Picture

What you said

“I feel the need for more connection with younger people...”

“People like to see a Police presence in the area and know that they will be responded to if there are issues”

“Parking on pavements restricts accessibility and makes it more dangerous for pedestrians”

Appendix B: Final Draft: Sevenoaks District Community Plan Priorities for Action 2019-2022

Safe Communities

The award winning Sevenoaks District Community Safety Partnership brings together all the key agencies in the District who have an impact on crime, anti-social behaviour and perception of crime.

The Community Safety Unit (CSU) is based in Sevenoaks District Council Offices and responds daily to anti-social behaviour and other community safety priorities in the District. The CSU now includes three dedicated Police Community Support Officers who are addressing Domestic Abuse, Vulnerable Adults and Vulnerable Young People. The CSU also has access to an additional Local Community Policing Team, which can be deployed to tackle local issues in the District.

By working together, the Community Safety Partnership has achieved one of the lowest crime rates in the county, and the lowest level of anti-social behaviour in the county. The Community Safety Partnership has now set up a Community Multi-Agency Risk Assessment Conference (MARAC). The focus of the Community MARAC is to help those at most risk of harm.

The CSU are able to use a variety of powers to tackle crime and anti-social behaviour, including powers to disperse anti-social behaviour, Community Protection Notices to stop a person, business or organisation committing anti-social behaviour, and Closure Power Orders to allow quick closure of premises which are being used, or likely to be used, to commit nuisance or disorder. The CSU have also set up Organised Crime Groups, which address organised crime and serious crime within communities.

What you said

From our consultations, we know residents are most concerned about:

- More visible policing - seeing and being more aware of Police and Community Safety activity in local communities.
- Reducing anti-social behaviour and supporting young people, particularly by providing activities and focusing on support and prevention.
- The need to focus on the District's crime issues and to disrupt behaviours in places of concern.
- Poor parking and parking on pavements making it difficult for people with access issues and people using pushchairs.
- Improving street lighting.
- Improving road safety and reduce speeding vehicles.
- Improving communication about what has been done successfully to tackle crime and anti-social behaviour.
- Providing support for and take action to prevent people from becoming repeat victims of crime, including people who suffer domestic abuse.
- Continuing to provide youth work and fun activities.
- Helping young people stay safe online, safe from bullying, and cyber-bullying.
- Recognising the link between alcohol misuse and community safety issues, including domestic abuse.

Appendix B: Final Draft: Sevenoaks District Community Plan Priorities for Action 2019-2022

Safe Communities - Your Priorities

Priority 1

Make the work of the Police and partners more visible in communities

We will:

- Deliver targeted community safety campaigns and make more people aware of Police and community safety activity in their local communities.
- Continue to facilitate Partners and Communities Together Panels (PACTs).
- Increase engagement with schools and older people around mental health, especially around addressing anti-social behaviour and community safety concerns.
- Communicate Community Safety Partnership successes to the local community.
- Consider police and emergency services facilities as part of the Sevenoaks District Infrastructure Delivery Plan as part of the Local Plan.

Priority 2

Work to keep crime at a low level and to respond to perception of crime

We will:

- Produce an annual assessment of crime and take action to safeguard local people and repeat victims of crime.
- Coordinate partnership work to tackle and prevent risk-taking behaviour relating to substance misuse and alcohol.
- Take action reduce and deter acquisitive crime and organised crime in the District.
- Through the Local Plan, ensure new development is designed to minimise threats and improve public safety.

Priority 3

Support vulnerable and repeat victims of crime and anti-social behaviour

We will:

- Identify repeat criminal and anti-social behaviour and provide early intervention.
- Continue to fund and evaluate domestic abuse support projects.
- Continue to raise public and professional awareness of Domestic Abuse.
- Identify those who are vulnerable to scams and distraction crime and ensure that training for professionals and safeguarding measures are put in place to protect people.
- Take action to safeguard children, young people and vulnerable adults, including those at risk of radicalisation, modern slavery, human trafficking, child sexual exploitation and from gangs.
- Promote online safety and online safeguarding champions through the work of the Kent Safeguarding Children Board.
- Deliver safeguarding training through the Kent Safeguarding Children's Board to improve awareness of safeguarding issues.
- Improve communication around key safeguarding issues.
- Work with Housing Associations to address low-level anti-social behaviour and through improved tenancy procedures.

Appendix B: Final Draft: Sevenoaks District Community Plan Priorities for Action 2019-2022

Priority 4

Tackle anti-social behaviour

We will:

- Coordinate action on high to medium risk victims, perpetrators and problem locations through the Community Multi-Agency Risk Assessment Conference (MARAC) process.
- Continue to set up Task and Finish Groups to deliver a focused approach on reducing Anti-Social Behaviour (ASB).
- Work with partners and use powers to tackle crime and anti-social behaviour at individual sites where crime and anti-social behaviour is occurring.
- Increase the use of ASB powers including the use of Closure Orders, Community Protection Notices and Criminal Behaviour Orders.
- Target work around nuisance dogs, dangerous dogs and dog fouling.
- Continue to commission and provide positive activities for children and young people.
- Provide youth work and youth outreach support and respond to service feedback from partners.
- Influence voluntary and community provision through the District Council's Community Grant scheme.
- Target initiatives to prevent bullying and cyber-bullying and review mental health support available to victims.

Priority 5

Tackle speeding vehicles and improve road safety for all road users, including pedestrians, cyclists and horse riders

We will:

- Take enforcement action on dangerous and illegal parking.
- Continue to support the "Speedwatch" campaign.
- Make roads/pavements safer for vulnerable people.
- Meet 90% of routine pothole and highways repairs carried out within 28 days.
- Put in place a programme of street lighting refurbishment based on age and condition information.
- Put in place a drainage-cleaning programme that protects roads and footways from the adverse effects of standing water.

Did you know?

During 2017/18, Sevenoaks District had the second lowest level of recorded crime across Kent, an improvement compared with the previous year when the District had the third lowest level of crime.

There were 1,619 incidents of anti-social behaviour in the Sevenoaks District recorded during 2017/18. This is the lowest level of anti-social behaviour recording in Kent during that period.

The Sevenoaks District Community Safety Unit won the Team Contribution Award at the West Kent Division Awards held in May 2018.



Caring Communities

Insert picture here

What you said

“I’d like more education about drugs, and about how to invest and use money wisely at school”

“Work with health and care agencies to support people in their own homes and keep them out of hospital”

“Provide services in the outlying areas and continue to support local groups, such as over 60s”

Caring Communities

The public sector is currently struggling with funding for essential services at a time of rising costs of social care. The growing number of older and frail people is increasing demands on services, as people are living longer. By 2036, we expect a 33% increase in the number of older people and a 97% increase in those over 85 years of age.

This also places challenges for our local services, with General Practitioner (GP) practices who find themselves, their services and infrastructure struggling to cope with an increased number of patients. The Kent and Medway Growth and Infrastructure Framework (2018 update) estimates the size of the challenge, with an estimated £2.76 billion required for health and social care infrastructure in Kent between 2017-2031, of which £939 million is identified as a funding gap. In West Kent, the expected funding gap is £279.9 million.

We know that in some areas of the District, a lack of income is making it difficult for some families. The Local Strategic Partnership, including Kent County Council and health partners, will work together in the District to ensure that children, young people, and their families are able to access appropriate services.

The new Homelessness Reduction Act (2017) set out some of the biggest changes to homelessness legislation since the Housing Act 1996. There is now an emphasis on providing free information, advice, and support at an earlier stage and for a longer period, for anyone who needs help or is threatened with homelessness. In addition, the government's programme of welfare reform as we move towards the full roll out of Universal Credit will present a challenge to those seeking to help vulnerable residents.

We want to support those who can to remain in their own homes, including people with disabilities and combat homelessness at an early stage, putting in place repairs and adaptations needed to prevent falls and help residents to maintain their independence. We also want to focus on tackling poor quality housing that is linked to poor health.

What you said

From our consultations, we know residents are most concerned about:

- Making sure that we are coordinating services around the individual.
- Considering the impact of loneliness and isolation.
- Improving communication about services available to residents in the District.
- Making sure deliver services are delivered in rural locations where people find it hard to access support and advice.
- Continuing support through Disabled Facilities Grants and the Better Care Fund.
- Advice for young people at school at drugs and money management.
- Supporting people to stay out of hospital and supporting local groups providing activities.
- The need for more social housing for local people.
- Supporting attendance at schools.
- Providing support for parents, particularly with children's health and development.

Sevenoaks District Community Plan Priorities 2019-2022

Caring Communities - Your Priorities

Priority 1

Support people to lead safe, independent and fulfilling lives

- Consider health and social care needs as set out in the Sevenoaks District Infrastructure Delivery Plan as part of the Local Plan
- Adapt residents' homes while they are in hospital so they can be discharged as soon as they are clinically ready
- Support people, including people with disabilities, through the One You, One You Your Home and Care Navigators to reduce loneliness and isolation, help people remain independent in their own homes, reduce emergency admissions to hospital and access to their General Practitioner (GP) services
- Support the towns and villages in the District to become dementia friendly and provide support for carers and families of people living with dementia
- Coordinate care navigator services across the District to ensure that wider ranges of residents are offered support for the non-medical reasons that they visit their GP.
- Work in partnership to make sure that the Better Care Fund provides innovative health and care solutions based around people's needs and in line with Sevenoaks District Council's Private Sector Housing Assistance Policy.
- Deliver actions in the Sevenoaks District Housing Strategy "Wellbeing Starts at Home" (2017) to support people to remain independent in their own homes
- Use the District Council's Community Grant Scheme to support groups, which provides social opportunities, and reduce loneliness and isolation of vulnerable people.
- Improve communication about support and services available to residents in the District.
- *Tackle the housing causes of health and wellbeing issues (see Priority 2 - Healthy Environment).*

Priority 2

Improve outcomes for children and young people

We will

- Provide advice for children and young people on substance misuse in schools and through of intervention programmes arranged by the Sevenoaks District Community Safety Partnership.
- Provide debt and financial advice for young people in schools.
- Provide outreach youth services for children and young people.
- Fund projects through the Sevenoaks District Local Children's Partnership Group that focus on key priorities, including, mental health, school attendance and healthy weight.
- Continue to provide support for parents and carers through Kent County Council's Early Help programme.
- Continue to provide family fun days during summer holidays for children and young people and their families.
- Consider education infrastructure needs as set out in the Sevenoaks District Infrastructure Delivery Plan as part of the Local Plan.

Sevenoaks District Community Plan Priorities 2019-2022

Priority 3

Meeting the needs of vulnerable and low-income households

We will

- Tackle non-medical causes of ill health, including housing, debt reduction, financial capability, energy savings and skills and employment through the work Sevenoaks District Council's HERO (Housing Energy Retraining Options) and SuperHERO advice services.
- Work proactively with those likely to be affected by future welfare reform and support people to access appropriate benefits.
- Ensure advice services reach rural and deprived communities.
- Provide grant support for projects providing free debt advice and debt reduction.
- Support people to maintain their tenancies and prevent homelessness.
- Provide early help support services for parents and carers affected by poverty or who have health, mental health and emotional issues which mean that their access to services or a child's development is affected.
- Support the implementation of the West Kent Housing and Homelessness Strategy.
- Deliver actions in the Sevenoaks District Housing Strategy "Wellbeing Starts at Home" (2017) to meet the needs of vulnerable and low-income households, and measures to improve the quality and use of existing housing stock, including mobile homes.
- Investigate Housing First and private rental model to improve access to housing and provide support with health and social support issues.

Did you know?

There has been a steady increase in the number of households housed in emergency and temporary accommodation in the Sevenoaks District over the last three years.

Since it began, HERO has helped over 2,000 residents plan a future for themselves and their family; reduced debt arrears by about £600 per person; and supported 40% of clients to receive the correct welfare and benefits payments.

Kent's Accommodation Strategy for Adult Social Care (Better Homes: Greater Choices) estimates that 30% of beds in care homes are occupied by people who could be better treated in their own homes or supported.



Green Environment

We want Sevenoaks District to be a place where people can enjoy clean and high quality urban and rural environments

Insert Picture

“Ensure housing..fits in with the surrounding buildings”

“Encourage and educate people on the environment and recycling”

“...protect our landscape and look at how we can improve our local environment”

“...maintain weekly recycling and waste collection as this is so important”

Green Environment

Residents in our District continue to want us to protect, conserve and enhance the Green Belt, landscape and natural environment. During 2017, Sevenoaks District Council sent surveys to every home in the District asking residents views on the “Issues” facing the area over the next twenty years and suggested “Options” for dealing with them. Over 15,000 responses were received and incorporated into the emerging Sevenoaks District Local Plan. The emerging Local Plan seeks to restrict development within the Green Belt in order to protect the special character of the District.

Government is increasing pressure on local authorities to build more homes to meet local needs and to encourage economic growth. The Local Plan will seek to find a balanced strategy for sustainable growth within our constrained district. We will be doing this by building within existing settlements and on previously developed land. We will only be building on the Green Belt in “Exceptional” circumstances, where developers are proposing social and community benefits for existing communities.

What you said

From our consultations, we know residents are most concerned about:

- Maintaining a weekly rubbish and recycling service.
- Protecting the Green Belt and ensure there is high quality development though the Local Plan.
- Making sure that infrastructure and environmental needs are considered as part of any new development.
- Using the Local Plan to protect residents from noise and light pollution, particularly with emerging issues such as Gatwick Airport expansion.
- Looking at ways of improving the way we can promote green and open spaces, parks and amenities.
- Take into account the impact of future further expansion at Gatwick Airport.
- Promoting more responsible dog ownership.
- Raising awareness of open spaces, green spaces, parks local amenities and leisure facilities.
- Maintaining public footpaths and bridleways.

Green Environment - Your Priorities

Priority 1

Protect our high quality natural environment, including the Green Belt, Areas of Outstanding Natural Beauty and biodiversity

We will:

- Use planning policies to protect our high quality natural environment, including the Green Belt, Areas of Outstanding Natural Beauty and biodiversity that form our unique character.
- Prioritise development within the boundaries of existing settlements, including building at higher density on non-Green Belt land.
- Ensure that proposals within the Kent Downs and High Weald Areas of Outstanding Natural Beauty (AONB) conserve and enhance the character of the landscape with regard to the relevant AONB management plans.
- Work with communities, landowners and local groups to protect landscape, wildlife and heritage, e.g. Darent Valley Heritage Landscape Partnership.

Priority 2

Maintain a clean local environment

We will:

- Protect a weekly rubbish and recycling service.
- Take action to reduce waste.
- Continue to tackle waste and detritus.
- Take enforcement action on fly tipping through camera deployment and increase partnership and community action.
- Encourage and promote recycling and support national recycling targets and campaigns
- Improve communication and information sharing with partners on environmental crime issues, including graffiti, littering and dog fouling.
- Promote a well-maintained Public Rights of Way Network to make it better for leisure and daily use.
- Ensure that the design and location of new development must take account of the need to improve air quality through the Local Plan and in line with Sevenoaks District Council's Air Quality Action Plan.

Priority 3

Ensure new development is designed to a high quality and takes into account the distinctive local character and the impact on the environment

We will:

- Use planning policies to ensure that new homes have a locally inspired distinctive character, integrate with surroundings, reinforce existing connections and create new ones, and take advantage of existing topography and landscape features.
- Ensure new development takes into account relevant design guidance, including Design Review, Supplementary Planning Documents, the Kent Design Guide, Conservation Area Appraisals and Management Plans, Neighbourhood Plans and relevant AONB Management Plans.
- Use planning policies to ensure new development satisfies Local Plan requirements relating to residential amenity, noise and outdoor lighting.
- Use planning policies to ensure that new development provides means of access for vehicles, pedestrians and well integrated car parking.
- Support climate change mitigation and adaption measures through the Local Plan.
- Improve the quality and use of the existing housing stock to improve local energy efficiency and raise awareness of the Sevenoaks District Switch and Save scheme.
- Avoid development in areas at risk of flooding through the Local Plan and ensure that measures to mitigate the effects of flooding are installed where appropriate.
- Promote and protect blue and green infrastructure (blue landscape elements are linked to water) and safeguard places for wildlife and nature through the Local Plan, including the use of Sustainable Drainage Systems.

Did you know?

Sevenoaks District Council is the only Council in the county to maintain a weekly rubbish and recycling service. This allows Sevenoaks District Council to send less than 2% of waste to landfill.

Sevenoaks District Council has the busiest Planning Team in the county of Kent. This reflects the dynamic nature of the District and the pressures on it too.

During 2017/18 a Sevenoaks District Open Space, Sport and Leisure Study was undertaken as well as a Playing Pitch Strategy endorsed by Sport England. These now form part of the supporting evidence for the Local Plan.



Healthy Environment

We want Sevenoaks District to be a place where people have healthy lifestyles and where health inequalities are reduced

Insert Picture

What you said

“Reduce loneliness and isolation”

“Provide better coordination for holistic health and care services, making partners work around the needs of the individual”

“Focus on prevention and increase preventative activities, rather than having to deal with people at the point of crisis”

Healthy Environment

Sevenoaks District Council has produced a new Housing Strategy, “Wellbeing Starts at Home” (2017), that recognise that our homes have an impact on health, as it is the place we spend the majority of our time. We want to use all of our public health and place-shaping tools to create environments that support wellbeing. We believe that our homes can have a significant impact on peoples’ health and homes that are badly maintained, full of hazards, cold and damp, will cause our health to suffer.

Health is not just about health care it is about lifestyle choices, decent housing, social networks, and access to leisure and open spaces. We want to create healthy communities and environments supported by services and infrastructure.

We recognise that social isolation and loneliness are key issues that have a negative effect on health, and that people need to connect with their local communities. The rural nature of our District means that many older and vulnerable people are still finding it difficult to access key health services by public transport.

We are working to transform health and social care services based around the needs of the individual. We are also aware of the continued impact on health and social care services of an increasingly frail and ageing population, together with an increase in the number of people suffering from dementia.

The NHS Sustainability and Transformation Plan (STP) for Kent and Medway sets out how health services need to change over the next five years to achieve the right care for people for decades to come. It is about making sure that services are prevention focused and coordinated around the needs of the individual, and that all partners’ services think about health care needs.

What you said

From our consultations, we know residents are most concerned about:

- Finding it difficult to access services, particularly General Practitioner and hospital appointments.
- Needing a preventative approach to healthy lifestyles and investment in leisure services and infrastructure.
- Supporting vulnerable people to remain independent and helping them take more responsibility for their own health.
- Promoting the benefits of active travel, e.g. everyday walking and cycling in support of health and mental health.
- Loneliness and isolation harming health and wellbeing.
- Providing suitable accommodation for older people, particularly support services and accommodation for people with dementia.
- Providing more joined up support for the frail and elderly.
- Promoting more joined up patient-centred working.
- Making better use of technology to support people’s health care needs.
- Supporting voluntary and community groups who are providing services.

Healthy Environment - Your Priorities

Priority 1

Reduce health inequalities and improve health and wellbeing for all

We will:

- Develop a campaign to tackle the stigma attached to loneliness and isolation and provide staff training on support services available to residents.
- Use the Local Plan to ensure new development is designed to improve mental health and reduce loneliness.
- Carry out Health Impact Assessments for new development as defined in the Local Plan and ensure mitigation of impacts on health, wellbeing and safety.
- Work with health partners to focus on an integrated place-based approach to health and wellbeing and aim to strengthen individual and community resilience.
- Transform the health and social care workforce by promoting independence and self-care (based on Kent County Council's Esther Model);
- Deliver One You initiatives that have an impact on obesity, long-term conditions, mental health and physical activity, loneliness and isolation.
- Work in partnership to support people with health and long-term conditions to prevent them progressing to high and very high levels of frailty.
- Carry out annual physical health assessments and provide follow-up care for people with serious mental illness.
- Work with partners to build the capacity of mental health crisis support services to meet local community needs.
- Work with partners in the Sevenoaks District Health Action Team to identify and address gaps in services through the Health Inequalities Action Plan.
- Work with General Practitioners and other health partners to identify and provide coordinated services for the most vulnerable through the NHS Multi-Disciplinary Team process.
- Use a variety of communication methods, including digital marketing, to take health and wellbeing information to residents.

Priority 2

Tackle the housing causes of health and wellbeing issues

We will:

- Through Sevenoaks District Council's Housing Strategy, "Wellbeing starts at home", help older and vulnerable people remain independent and self-care, by health proofing housing and using assistive technology to improve support.
- Deliver innovative health and housing programmes to provide aids, adaptations and devices and to enable people to live more independently and provide support for them to return home from hospital as soon as they are clinically ready.
- Tackle the housing causes of ill health through the work of the Council's HERO (Housing Energy Retraining Options) and SuperHERO advice services.
- Support new housing designed for older people, and for people with physical disabilities, including specialist retirement accommodation and register care homes (particularly dementia-specialist) both market and affordable through the Local Plan.
- Identify grants and other funding opportunities to improve housing and support independent living.

Sevenoaks District Community Plan Priorities for Action 2019-2022

Priority 3

Encourage access to health services for all

We will:

- Consider health and social care needs set out in the Sevenoaks District Infrastructure Delivery Plan as part of the Local Plan.
- Assess and address gaps in General Practice primary health care services through the NHS Health and Social Care Sustainability and Transformation Plan (STP) process and establish a single primary care strategy for Kent and Medway.
- Work with partners to develop community hubs to offer holistic and more joined up health services based on a person-centred approach.
- Ensure that a health in all policies approach that links a wider range of services such as leisure and housing advice services to the health prevention agenda to have an impact on health and wellbeing.
- Provide training for front line health and social care staff in “Active Signposting” to ensure patients are directed to the most appropriate help.
- Encourage people with disabilities to take part in sport and volunteering.
- Support the retention of existing sport and leisure, unless it can be re-provided, taking into account local needs and improvements in quality through the Local Plan.
- Ensure new development takes into account open space and infrastructure.
- Support proposals to improve the quality of and/or access to the District’s open spaces, Public Rights of Way and cycling routes through the Local Plan.
- Support active lifestyles through Kent County Council’s Rights of Way Improvement Plan and actions to increase health and wellbeing benefits.
- Support and promote voluntary and community transport schemes.

Did you know?

People with serious mental illness face a shorter life expectancy by an average of 15-20 years, are 3 times more likely to smoke, 3½ times more likely to lose all teeth, at double the risk of obesity and diabetes and 3 times the risk of hypertension.

Being lonely means you are 3.4 times more likely to suffer depression, 3.5 times more likely to need residential care, 1.8 more likely to end up visiting a GP and 1.6 times more likely to end up in Accident and Emergency.

From 2014/15-2016/17, the recorded dementia prevalence rate in the Sevenoaks District was 0.8% of patients on GP registers (all ages). This is in line with the Kent average but represents an increasing trend from 2012/13 (0.6% average for Kent)



Dynamic Economy

We want Sevenoaks District to be a place with a thriving local economy, where businesses flourish and people have skills for employment

Insert Picture

What you said

“Target and support those who want to work but need help overcoming barriers”

“Continue to provide support for businesses in the District, including developing business centres and business hubs”

“Look at the challenges and opportunities from Brexit, particularly given our close connection with London”

Sevenoaks District Community Plan Priorities for Action 2019-2022

Dynamic Economy

Sevenoaks District Council's Economic Development Strategy 2018-2021 sets out five themes for Economic Development. These include growth and investment to regenerate key market towns, infrastructure to serve our communities, visitor economy to maintain the District as a key destination for visitors, skills to ensure residents and businesses can gain the skills they need and enterprise, to ensure our District continues to be a place where businesses can prosper and grow.

It also looks at our District's economic strengths, weaknesses, threats and opportunities. One of our most significant challenges continues to be the pressure on employment sites for housing and the extension of permitted development rights to allow conversion of offices to housing. There are also concerns about the varying quality of mobile and broadband coverage across the District and changes in the retail sector because of online shopping that are affecting our high streets.

The emerging Sevenoaks District Local Plan is also working to support a vibrant and balanced economy. It does this through measures to protect employment sites and have planning policies in place to create employment opportunities and vibrant town and local centres as well as protecting existing tourism attractions and encouraging tourism in urban and rural areas.

As economic growth is linked to housing, affordability of housing, transport and supporting infrastructure in our District are significant issues affecting businesses and their ability to recruit and retain staff.

What you said

From our consultations, we know residents are most concerned about:

- Businesses needing good movement of goods and services and people and better transport infrastructure to support this.
- Helping local business to employ local apprentices to improve work opportunities of local people and allowing young people to have a great start to their working life.
- Regenerating New Ash Green, Swanley and Edenbridge.
- Opportunities for more informal overnight stay accommodation to support tourism.
- Accessibility and quality and connectivity of transport services affect how we attract and retain businesses.
- Looking at how we are supporting more vulnerable groups into pathways to employment and training.
- Making sure local shops are viable to meet the needs of the local communities they serve.
- Continue providing support for businesses.
- Creating opportunities to develop business hubs and business centres.
- Supporting local people with skills is essential, particularly given we have no higher or further education facilities in the District.
- Looking at broadband speed and reliability as well as mobile phone networks and thinking about the impact on rural economy.
- Look at Brexit threats and opportunities for business in the District.

Dynamic Economy - Your Priorities

Priority 1

Promote economic growth and investment

We will:

- Identify and retain sites for employment, in the District and protect office accommodation through the Local Plan to support the economy.
- Through our planning policies, support the development of new employment allocations, and other new employment units for small to medium sized businesses in suitable locations.
- Use planning policies to restrict the scope of permitted development rights on all office accommodation and relating to office space conversions to residential conversions.
- Encourage investment and promote “inward investment” to secure new employment and retail sites and buildings in the District.
- Work to secure investment and regeneration in towns and large villages, including Swanley Town Centre and New Ash Green and Edenbridge.
- Use Planning Policies to focus on employment needs and place-making within the major towns in the Sevenoaks District.
- Work with neighbouring Local Authorities to take into account the impact of major developments outside the District, including Gatwick, Biggin Hill, Ebbsfleet and Dartford’s London Resort.

Priority 2

Improve skills for employment

We will:

- Assess residents employment support needs, provide joined-up support and signpost people to appropriate services to meet their needs, particularly those needing the most support to access jobs and training.
- Develop and implement supported internship programmes working with young people registered with an Education and Health Care Plan.
- Create links between Employer Guilds and key statutory and voluntary sector partners to look at opportunities in key sectors, including construction, health and social care, financial services, land based and creative and media.
- Support initiatives that prevent people from becoming NEET (Not in Employment, Education or Training) or support people who are NEET into pathways to work, education or training.
- Develop stronger relationships with education and training providers through the work of the Local Strategic Partnership Supporting People into Employment Group.
- Delivering the West Kent Enterprise Adviser Network to secure our future workforce and championing training in the workplace for older people.
- Promote apprenticeships, degree level apprenticeships, and other pathways to careers.
- Participate in regular skills fairs.
- Work with the University of the Third Age and the Sevenoaks District Older People’s Forum to support adults to remain economically active and provided with opportunities to reskill.
- Look at opportunities for supported housing initiatives linked to education and skills.

Sevenoaks District Community Plan Priorities for Action 2019-2022

Priority 3

Improve broadband connectivity and support people to be more digitally aware

We will:

- Use planning policies to ensure that new development is technology ready, including the provision of high quality telecommunications and broadband connections.
- Develop a partnership digital inclusion strategy mapping support available to residents in the community.
- Work with the West Kent Partnership to implement high-speed (5G) broadband services across West Kent and address local issues with mobile phone coverage.

Priority 4

Keep existing businesses, encourage new businesses and tourism

We will:

- Support new and existing businesses through a “team around the business” approach.
- Work with Visit Kent and Produced in Kent to promote and market the District’s tourism offer.
- Work with the agencies to look at opportunities for funding opportunities for rural business through the West Kent Partnership
- Use planning policies to encourage the re-use of existing retail units, where appropriate, to ensure active frontages (e.g., retail, community, food and drink usage and fronts of residential units are located long major routes and adjacent to areas used by the public).
- Use planning policies to support the provision of sustainable tourism development.
- Support tourism sector initiatives to develop a wider overnight stay accommodation choice.
- Work with Visit Kent, Produced in Kent and other to promote tourism.

Did you know?

In the period 2018 and 2036, there will be a 0.7% reduction in the working age population at a time when we have an increasing demand on social care services due to an ageing population.

91% of businesses in the District have fewer than 10 employees.

There are 30 large employment sites in the District, which provide land for accommodation, warehousing and industrial uses

The Sevenoaks Visitor Economy represents £230 million to the local economy, with 3.9 million visitors and 5,032 jobs.



Sustainable Economy

Where people can live, work and travel more easily and are empowered to shape their communities

Insert Picture

What you said

“More affordable housing, I am 24 and work full time yet any housing is way out if my budget”

“We've seen in our locality a lot of removal, reduced and changed bus services which have directly impacted on accessing GP surgeries, shops, schools etc...”

“Provision of electric car charging points will be more important for the future”

Sustainable Economy

Sevenoaks District provides excellent transport connectivity, particularly to London and the London airports. However, residents have told us that they continue to have particular issues accessing key local services and facilities. A new Strategic Transport Assessment is currently in development and will provide information about transport implications for the emerging Sevenoaks District Local Plan. The Local Plan will also have regard to Kent County Council's refreshed Growth and Infrastructure Framework (2018) and the Local Transport Plan 4: Delivering Growth Without Gridlock (2016-2031) which sets out transport priorities for the Sevenoaks District.

The Local Plan looks to ensure that communities are well connected and supported by appropriate infrastructure. The Local Plan will make provision for integrated and improved transport infrastructure. We also need to make sure we make the best use of the Community Infrastructure Levy (CIL) for the benefit of residents.

Sevenoaks District Council's Housing Strategy, "Wellbeing Starts at Home" (2017) is based on a comprehensive district-wide Housing Needs Study. It recognises that house prices in the district are still not affordable for many people. The strategy aims to support innovative schemes to give young people a chance to own their own home in the District where they grew up. Together with the Local Plan, which will provide for housing choices, it is recognised that there needs to be more thought, more options, more supply and better design to make downsizing more popular for older people and free up homes for families, provide supported accommodation for older and vulnerable people and affordable housing in rural areas. Residents are also concerned that new housing is supported by appropriate infrastructure.

Local services need to respond to the needs of the residents we all serve, and residents need to have a chance to be involved in shaping the services and issues that affect their local community.

What you said

From our consultations, we know residents are most concerned about:

- Needing more frequent and timely public transport services, improved access to local services and facilities, particularly hospitals and GPs and schools, more services at evenings and weekends and improved transport connectivity.
- Ensuring that infrastructure is a key consideration in new developments, particularly transport infrastructure.
- Improving access to services in villages and rural areas.
- Need for more affordable housing, including housing for young people whose income cannot match the cost of housing in the area and housing to meet the needs of older people.
- Do more work to bring empty properties back into use and work with private landlords to bring more private sector rentals onto the market.
- More partnership working to encourage and support community activities.

Sustainable Economy - Your Priorities

Priority 1

Make it easier for people to travel to key local services and improve infrastructure

We will:

- Produce an Infrastructure Delivery Plan that supports the implementation of the Local Plan and how and when necessary infrastructure schemes will be delivered throughout the plan period.
- Ensure that through the Local Plan, where new development creates a requirement for new or improved infrastructure, that developers will provide or contribute to that requirement.
- Work in partnership with Kent County Council, Highways England and other transport delivery partners to mitigate adverse travel impacts from new development, promote sustainable modes of travel and encourage initiatives, which seek to improve health and wellbeing.
- Produce a new Transport Strategy for the District based on the Strategic Transport Study (commissioned by Sevenoaks District Council) to facilitate improvements to transport in the District.
- Consider the transport infrastructure needs set out in the Sevenoaks District Infrastructure Delivery Plan as part of the Local Plan.
- Use planning policies to make provision for integrated and improved transport infrastructure, including electric vehicle charging points through direct improvements and/or developer contributions.
- Promote safe and high quality pedestrian and cycling routes to key local services, transport interchanges such as bus and rail services through the Local Plan and the Sevenoaks District Cycling Strategy.
- Use the Community Infrastructure Charging scheme to provide funding for infrastructure to address funding gaps to deliver local and/or strategic schemes.
- Continue to use S106 (of the Town and Country Planning Act 1990) for site-specific, on-site infrastructure improvements, including open spaces, highways and sustainable transport improvements.
- Provide community grant funding and promote voluntary and community transport schemes.

Priority 2

Provide a good mix of decent and affordable housing across tenures

We will:

- Deliver the Sevenoaks District's Housing Strategy, "Wellbeing Starts at Home" and deliver actions to provide a good mix of decent housing across tenures.
- Ensure that new housing creates mixed, balanced and inclusive communities, including housing for older people and people with physical disabilities, through the emerging Local Plan.
- Ensure that new housing contributes to the delivery of affordable housing (including social rented, affordable rented and intermediate housing) through the emerging Local Plan.
- Increase the amount of private rented housing in the District.
- Explore measures with a view to reducing under-occupation and over-crowding and support people wanting to downsize through the District Housing Strategy.

Sevenoaks District Community Plan Priorities for Action 2019-2022

Priority 3

Help people to shape their local communities

We will:

- Ensure that local people are placed at the centre of our services and that they are involved in designing and shaping services and the issues that affect them or their local areas.
- Work with local communities on community-led housing initiatives.
- Support Neighbourhood Plans through the Sevenoaks District Local Plan.
- Through the Local Plan, encourage community-based participation in shaping public spaces and in a way that improves social, economic and cultural opportunities.
- Support work that enhances community connections to tackle loneliness and social isolation.
- Support the voluntary, community and faith sectors in community activities and local initiatives that support the Sevenoaks priorities set out in the Community Plan.
- Create opportunities for people to be involved artistically and culturally and to exercise and improve their health and wellbeing, in the tranquil and inspiring Areas of Outstanding Natural Beauty in the District.
- Work to support community assets and increase community resilience.
- Engage local residents in the remodelling of Local Care systems for health and wellbeing.
- Set up a voluntary sector forum for voluntary, community and faith groups.

Did you know?

House prices in the Sevenoaks District are up to 17 times higher than the average yearly wage, making it almost impossible for younger people to step onto the housing ladder.

During 2017/18, the Community Infrastructure Levy (CIL) Board agreed a total value of £1.26 million for infrastructure projects in the Sevenoaks District, including Swanley Station improvements.

The headline housing need for the Sevenoaks District is currently 698 homes to be built every year (figure provided by central government and subject to change). This is quadruple the existing target of 165.

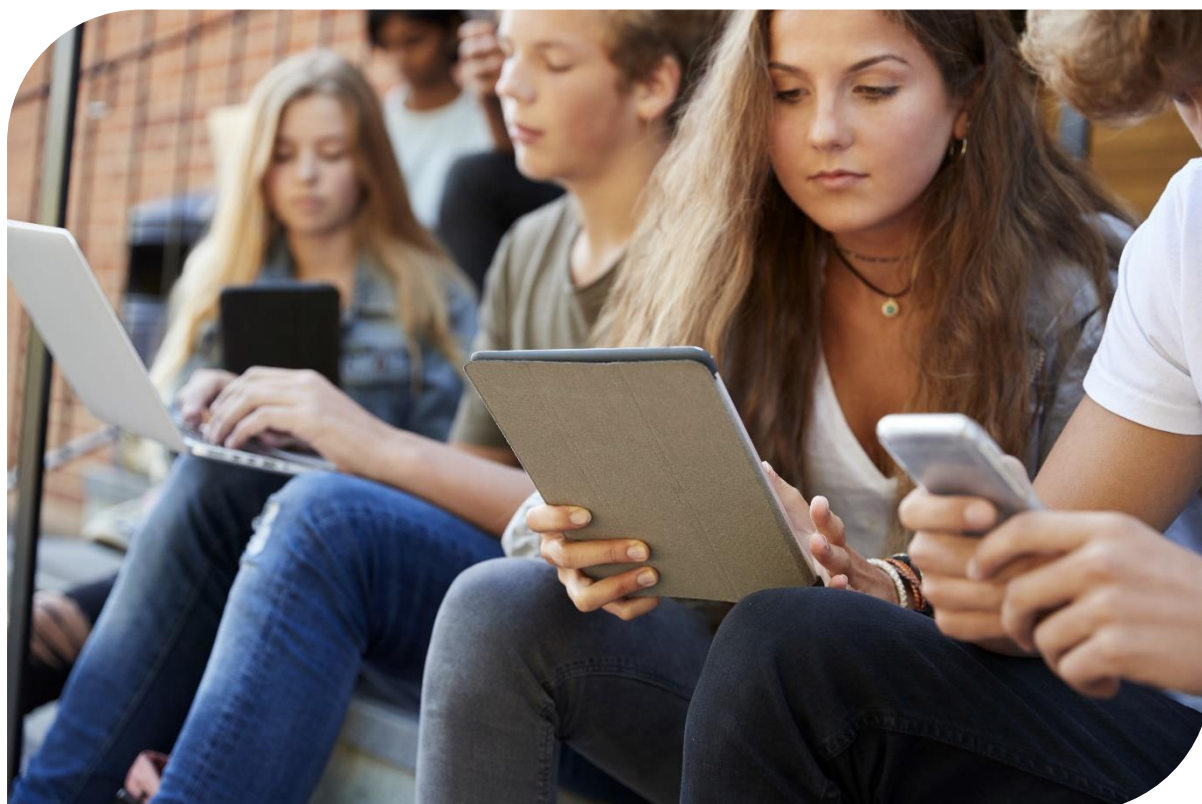
Public Consultation Draft

For more information or to get in contact

Telephone 01732 227000

Website www.sevenoaks.gov.uk/consultations

Email community.plan@sevenoaks.gov.uk



This publication is available in large print. For a copy please call 01732 227000

If you need help communicating with us or understanding the document, we can arrange for an interpreter to help you. Please contacting us on 01732 227000 stating you language and preference